

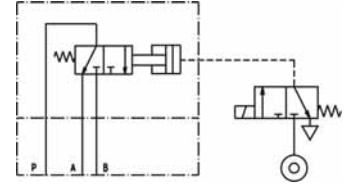
# Multi tool valves

Multi tool valves divides the flow produced by a pump between two or more water tools either simultaneously or individually.



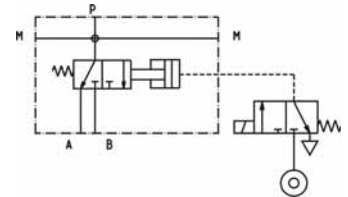
**Electro pneumatic multi tool valve**  
3/2 Way valve in "Inline" design.

Op. pressure: max 21,800 psi  
Flow rate: max. 46.4 gpm



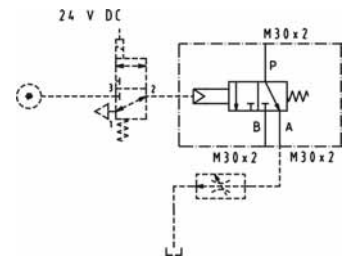
**Electro pneumatic multi tool valve**  
3/2 Way valve in "Pipeline" design.

Op. pressure: max 21,800 psi  
Flow rate: max. 79 gpm



**Electro pneumatic multi tool valve**  
3/2 Way valve

Op. pressure: max 43,500 bar  
Flow rate: max. 13.2 gpm



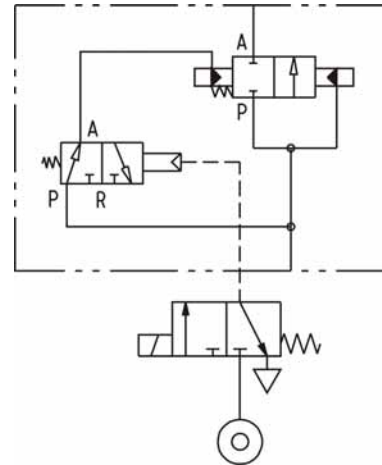
**Electro pneumatic multi tool valve**  
3/2 Way valve

Assembled on a plastic pallet complete with terminal box, emergency stop button and control connections.  
All components in contact with the medium are rust proof.

Op. pressure: max 43,500 bar  
Flow rate: max. 5 x 5.3 gpm  
Number of valves: max. 5

# Solenoid actuated valves

Solenoid actuated valves enable various pressure lines to tools (for instance in parts washing or de-burring machines) to be opened or closed. They are available in "Inline" and "Pipeline" designs and all medium bearing components are rust proof



## Solenoid actuated valve

As 2/2 Way valve

Op. pressure: max 11,600 psi

Flow rate: 79.2 gpm



# Non return valve

The non return valve stops water emitting from the tool when there is less than 145 psi in the system.



## RV 1

Op. pressure: max 26,100 psi

Opening pressure: 160 psi

Closing pressure: 145 psi